

# CLARE



## PARTICULARS

Vessel type	Floating Crane
Official Number	181
Flag / Port of Registry	Greek / Piraeus
Built	2008 [Re-built 2020]
Classification	INSB, Floating Crane, Unrestricted Navigation

## DETAILS

Length overall	76.20 m
Breadth	24.38 m
GRT-NRT	2320/696
Depth moulded	4.88 m
Maximum draft / DWT	3.90 m / 4809 tons
Lightship draft / weight	1.22 m / 1895 tons
Clear deck Space	745 m <sup>2</sup> (subject to deck layout)
Deck strength	15 t/m <sup>2</sup>

## CAPACITY

Fuel oil	160 m <sup>3</sup>
Fresh water	334 m <sup>3</sup>
Rec oil	1118 m <sup>3</sup>
Storage room	400 m <sup>3</sup> / 2 x 2 m access hatch

**CRANE PERFORMANCE**

Maker	Manitowoc
Type	16000
Built	2008
Main boom	30 to 96 m
Extended upper boom point	9 m
Available hook blocks	1 x 272 tons + 2 x 100 tons + 1 x 45tons
Installed counter weights	Series III – 205 tons

**AUXILIARY EQUIPMENT**

Main generator set	2 x CAT, 400 kVA
Air compressor	LP Air Compressor E-Drive, 10.2 m <sup>3</sup> / min @ 7bar / 55kW
Sewage treatment	MINI BIOCON STP, 2500 liters / 24 hours

**MOORING EQUIPMENT**

Type	4-point mooring system
Winches	4 x 30 tons Transvictory hydraulic single drum winch
Winches pull load test (SWL)	30 tons @ 1 <sup>st</sup> Layer
Winches brake holding test	45 tons @ 1 <sup>st</sup> Layer
Winches wires	Each drum is fitted with 600 m steel wire rope of 36 mm diameter
Winches powerpack	2 x 90 kW Elec-Hydraulic
Anchors	4 x Delta Flipper @ 5 tons
Fairleads	4 x Roller Fairleads, SWL 80 tons 4 x Anchor Fairleads Deck Mounted, SWL 75 tons
Towing brackets	2 x Tow Bracket, SWL 30T Fwd 2 x Tow Bracket, SWL 30T Aft
Bollards	8 x Double Bollards, SWL 38 tons
Fendering	Truck Tires

**ACCOMMODATION**

Berths	2 x 4 berth
Office	15 m <sup>2</sup>
Galley	1
Toilet / Shower block	1

**VIDEO PRESENTATION**

<https://youtu.be/vYvxxn3oppo>

**CRANE MAIN FEATURES**

- The crane is equipped with the following limit devices that ensure precise load control by instantly matching the crane's commands:

- BAIL LIMIT – DRUM SPOOLING LIMITER (MINIMUM & MAXIMUM)
- BOOM UP LIMIT
- BLOCK UP LIMIT

- The rising and lowering of the crane's main wire is fully controlled hydraulically. Therefore, during the lowering operation, the crane operator can carry out the relevant movements precisely in comparison with other cranes that are equipped with a free-fall system.

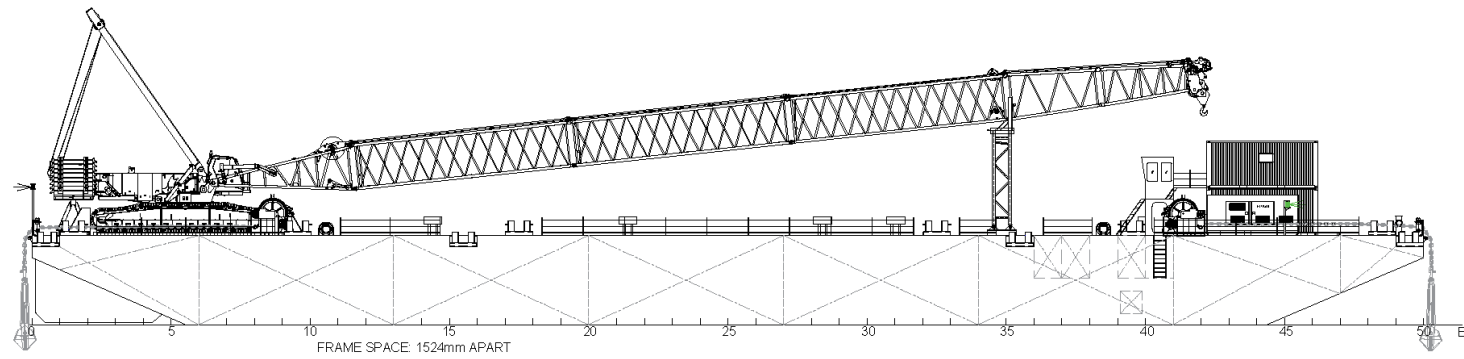
- Manitowoc's RCI/RCL system is fitted on the crane to aid the operator in identifying overload conditions, which can cause structural failure of the boom or loss of stability. More specifically:

- Rated Capacity Indicator (RCI) — is a system of devices that automatically provides an audible/visual signal when the actual load approaches, reaches, and/or exceeds the rated capacity value when applied to the current crane configuration.
- Rated Capacity Limiter (RCL) — is a system of devices that automatically provides an audible/visual signal when the loading conditions approach, reach, and/or exceed the rated capacity value when applied to the current crane configuration. When the actual load exceeds the rated capacity, the RCL/RCI system supplies a signal to stop some of the crane functions.

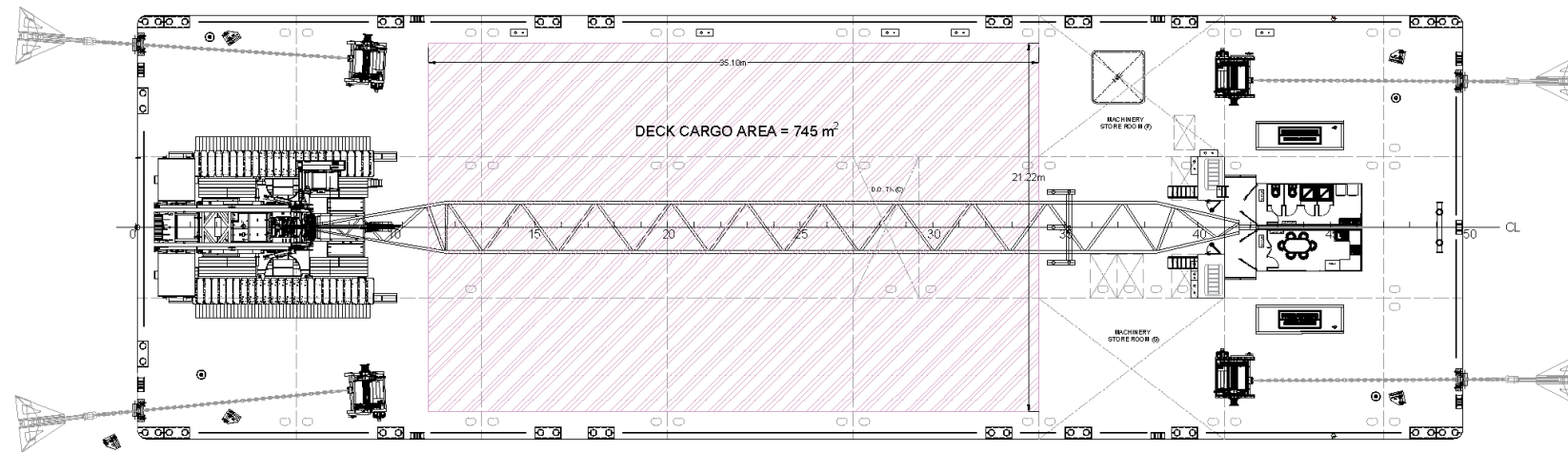
The controller disables the following crane functions until the overload condition is corrected:

- Hoist up
- Boom down (or up if boom is raised above its maximum chart angle)

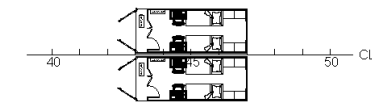
# GENERAL ARRANGEMENT PLAN



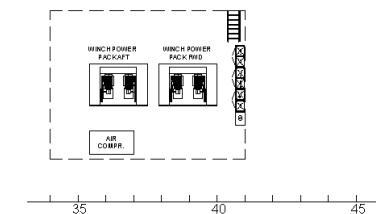
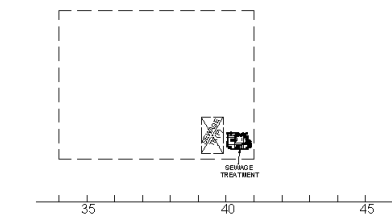
PROFILE



MAIN DECK



ACCOMMODATION DECK



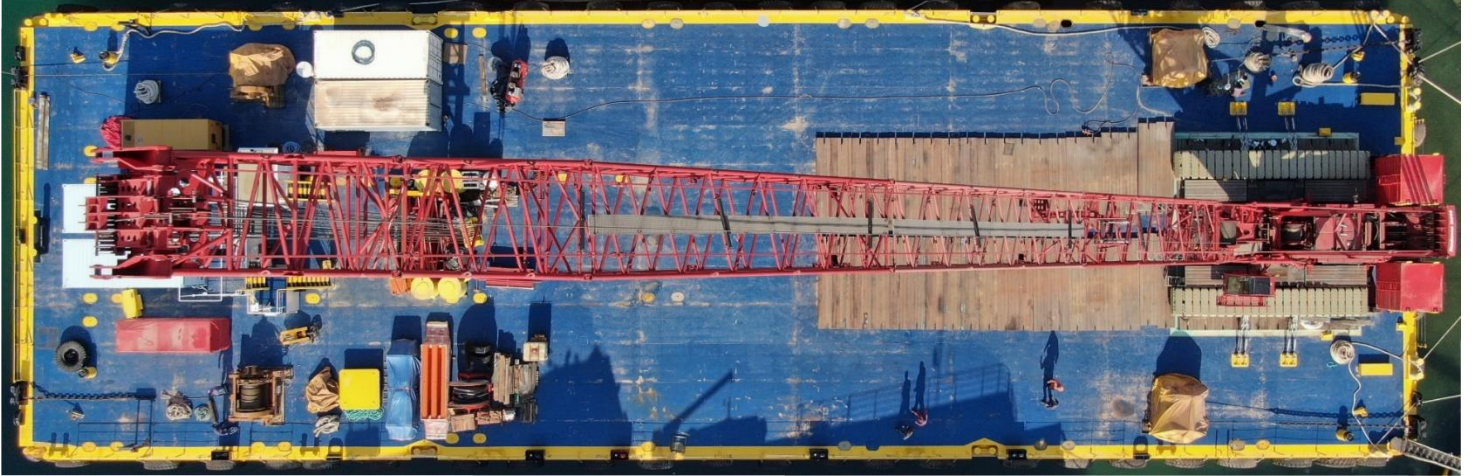
**MAIN DIMENSIONS**

LOA	76.200 m
B (MOULDED)	24.384 m
D (MOULDED)	4.880 m
T (MOULDED)	3.903 m
DECK LOADING	15 mt/m2

Description:	Date:	Chk:
<b>F/C "CLARE"</b>		
<b>GENERAL ARRANGEMENT PLAN</b>		
SmFWD P.C Engineering Office 25, Athinon St., Chania, Greece Tel: +302825 25551 Fax: +302825 25552 www.smfwd.com	Scale: <b>1:200</b>	Class: Date: <b>31/10/19</b>
<small>THIS DRAWING MUST NOT BE COPIED, REPRODUCED OR USED FOR ANY PURPOSE OTHER THAN THE PROJECT IT IS INTENDED FOR.</small>		Dwg No.:
Rev. <b>1</b>	Approved:	Checked:
	Drawn:	



## TOP VIEW

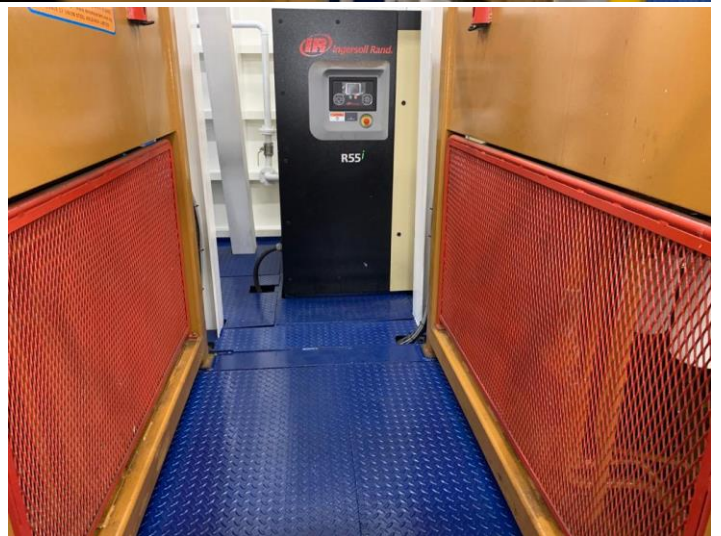


## MANITOWOC 16000





## MACHINERY ROOM



## STORAGE ROOM

